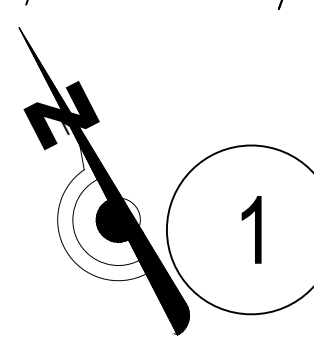


Plot North (scaled)
Pg. 3, P.C. 182



1 EXISTING SURVEY
SCALE: 1" = 20'-0"

0 20 40 60
GRAPHIC SCALE: 1" = 20'-0"

ARCHITECT:
K2M DESIGN
Architecture, Engineering,
Interior Design,
Asset Management,
Specialty Consulting
Key Largo, FL
Key West, FL
Marathon, FL
URL: www.k2mdesign.com
PROF. REG. AA26001059
Building Relationships
Based on Trust and Results
Cavalard | Columbia | Indianapolis | Key Largo | Key West | Marathon | Orlando | Tallahassee | Tallahassee

Seal:
STEVEN S. GRADLEY
LICENSE
No. 73110
PROFESSIONAL ENGINEER
FLORIDA
L.C. NO. 73110
C.O.A.: 30945
Steven S. Gradley, FL PE # 73110
Expiration Date: February 28, 2017

Consultants:

Submissions:
2018.10.31 - PERMIT SET

NORTH BUILDING REMODEL
90050 OVERSEAS HIGHWAY
TAVERNIER, FLORIDA, 33070

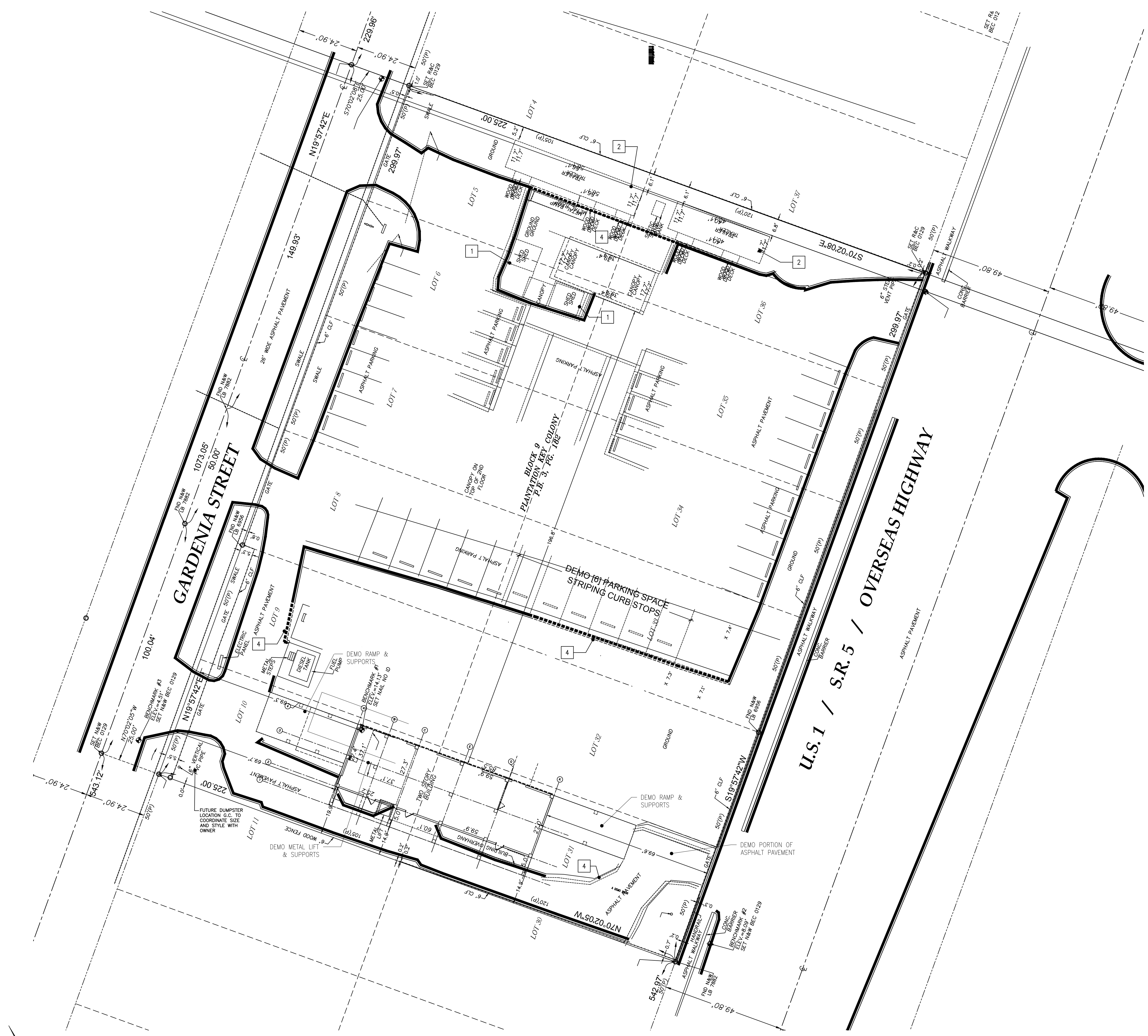
MONROE COUNTY SCHOOL DISTRICT

Drawing Size | Project #:
16347
Drawn By: | Checked By:

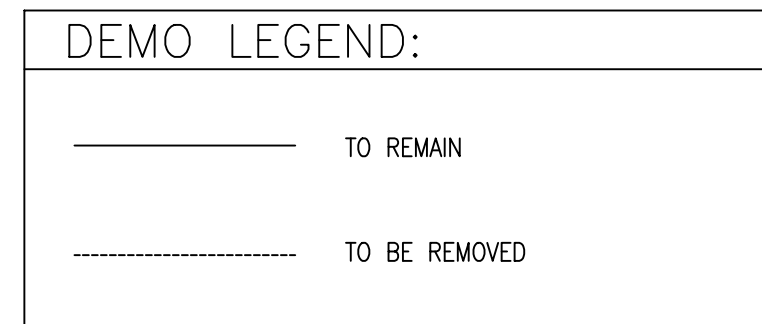
Title:
EXISTING SURVEY PLAN

Sheet Number:
C0.0.1
Date: October 31, 2018
©2018 by K2M Design, Inc.

A:\2018\1031 - Monroe County School District - 90050 Overseas Highway - 16347.dwg, 10/31/2018 1:03 PM, user: 11, vba: k2m



- CODED NOTES**
- 1 EXISTING SHED TO BE RELOCATED CONTRACTOR TO COORDINATE WITH MCSD.
 - 2 CONTRACTOR TO DEMO EXISTING TRAILER
 - 3 EXISTING CANOPIES TO BE RELOCATED COORDINATE WITH MCSD
 - 4 REMOVE PORTION OF CURB



1 SITE DEMOLITION PLAN
SCALE: 1" = 20'-0"



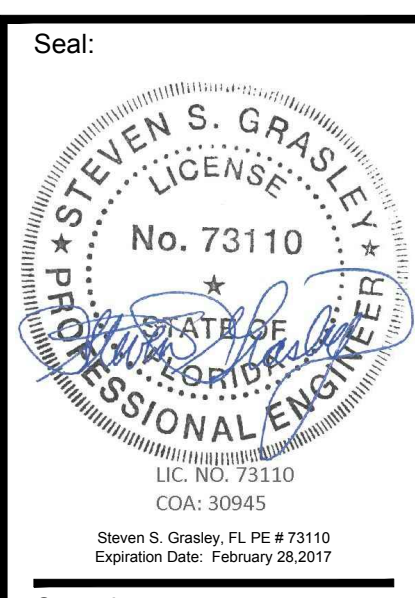
ARCHITECT:
K2M DESIGN
Architecture, Engineering,
Interior Design,
Asset Management,
Specialty Consulting

Key Largo, FL
Key West, FL
Marathon, FL

URL: www.k2mdesign.com
PROF. REG. AA26001059

Building Relationships
Based on Trust and Results

Covered | Columbia | Indianapolis | Key Largo | Key West | Marathon | Orlando | Sarasota | Venice



Consultants:

Submissions:
2018.10.31 - PERMIT SET

NORTH BUILDING REMODEL
90050 OVERSEAS HIGHWAY
TAVERNIER, FLORIDA, 33070

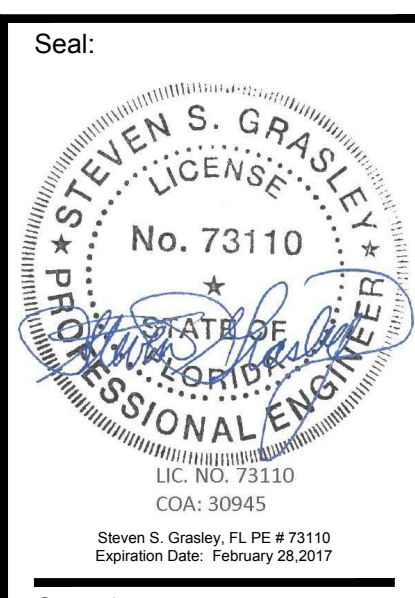
MONROE COUNTY SCHOOL DISTRICT

Drawing Size | Project #:
| 16347

Drawn By: | Checked By:

Title:
SITE
DEMOLITION PLAN

Sheet Number:
C1.1.1
Date: October 31, 2018
©2018 by K2M Design, Inc.



Consultants:

Submissions:
 2018.10.31 - PERMIT SET

NORTH BUILDING REMODEL
 90050 OVERSEAS HIGHWAY
 TAVERNIER, FLORIDA, 33070

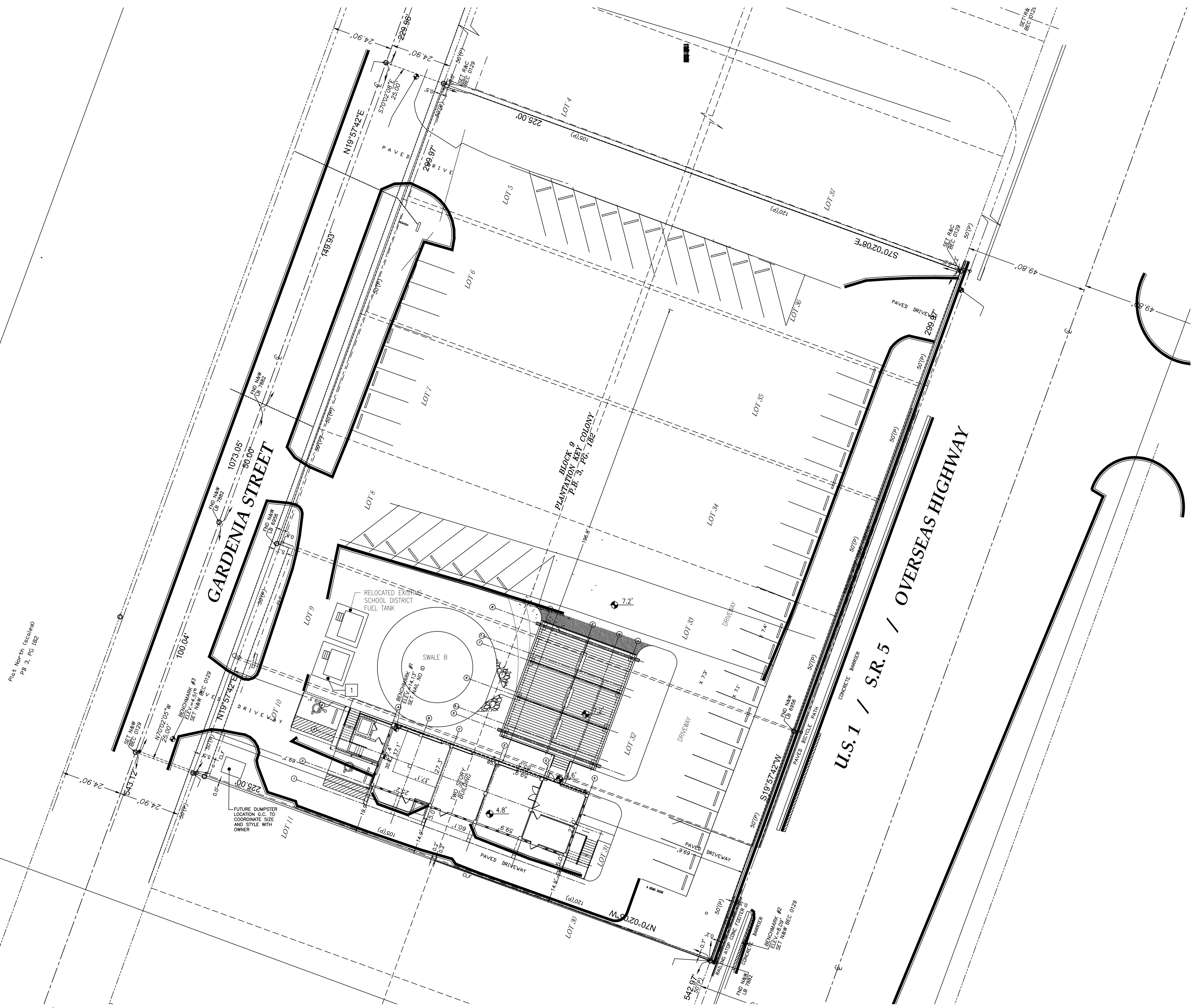
MONROE COUNTY SCHOOL DISTRICT

Drawing Size | Project #:
 Drawn By: | Checked By:

Title:
 SITE IMPROVEMENT PLAN

Sheet Number:
C1.1.2
 Date: October 31, 2018
 ©2018 by K2M Design, Inc.

CODED NOTES	
1	NEW UNLEADED TANK
2	RELOCATED DIESEL TANK



1 SITE IMPROVEMENT PLAN
 SCALE: 1" = 20'-0"



Plot North (Scale 1/4")
 PG 2, PG 1B2

J:\2018\10-31-2018 - Monroe County School District - North Building Remodel - 10-31-2018 - 11:03 AM - sheet - 11 - title.dwg



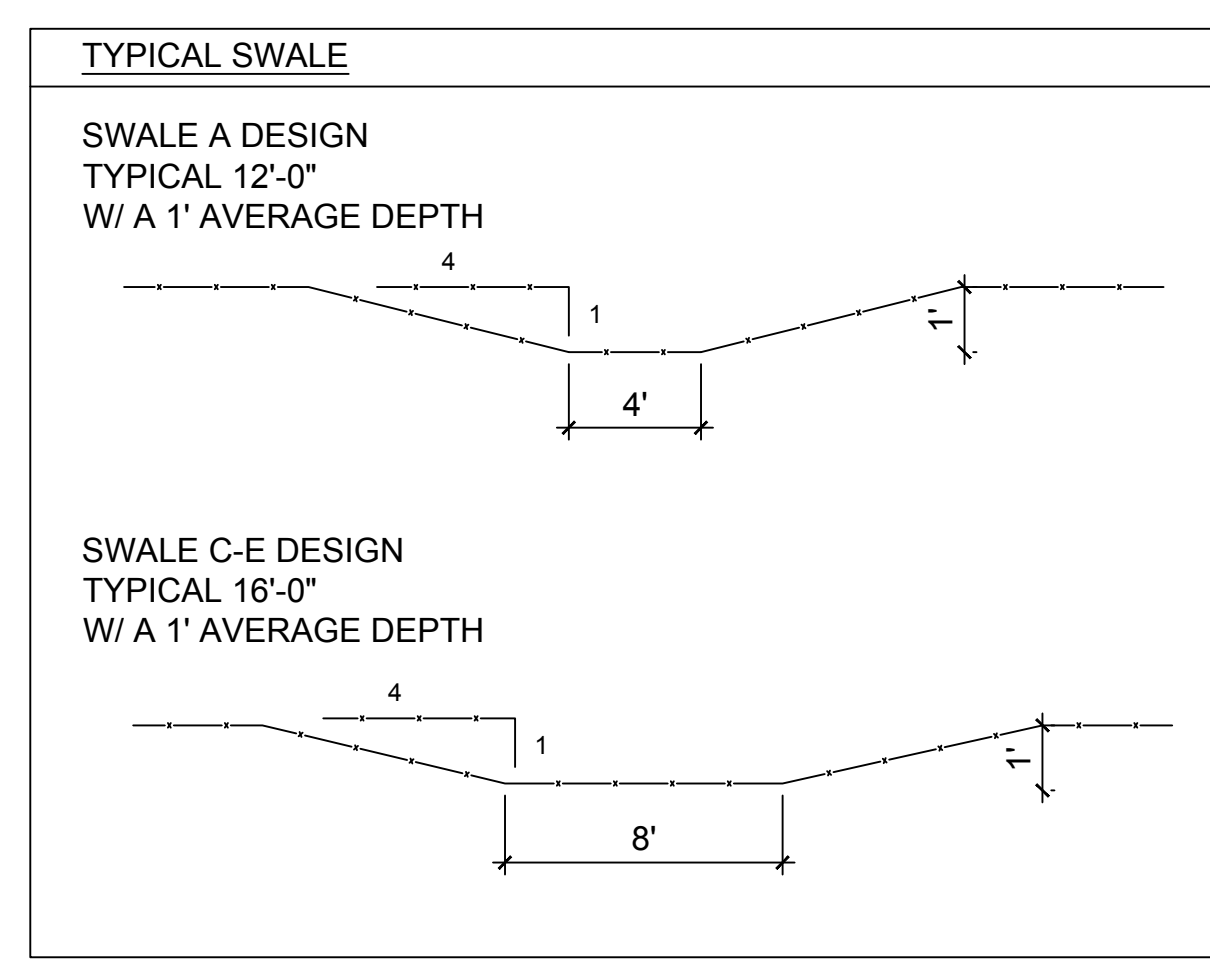
Pre-Development Land Use - Overall Site

Land Use	Area sf	Area ac	Imperv. ac	Perv. ac
Total Area	67,495	1.549		
Developed Site		0.000		
Impervious	42,506	0.976	0.976	
Pervious	19,335	0.444		0.444
Total		0.976	0.444	
Percent		63%	29%	
CN				
Comp. CN =				

Land use	Area sf	Area ac	Imperv. ac	Perv. ac
Total Site	67494.62	3.14		
Building Dripline	4745	0.109	0.109	
Asphalt	37761	0.867	0.867	
Lanscaping/Pervious	19335	0.444		0.444

Water Detention Requirement			
Base Requirement	2.5" over impervious surface		8855.42 cf
	1" over entire surface		5153.42 cf

Dry Detention Volume Requirement			
4.2.1(a)2: 75% of Wet Det. Req.			6641.57 cf



Retention A - Swale Storage Capacity		
Top Area	2493.6	sf
Bottom Area	1221.3	sf
Total Volume	2468.1	cf

Retention B - Swale Storage Capacity		
Top Area	1963.5	sf
Bottom Area	1385.5	sf
Total Volume	2367.25	cf

Retention C - Swale Storage Capacity		
Top Area	1841	sf
Bottom Area	890	sf
Total Volume	1810.5	cf

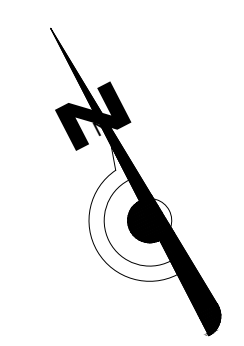
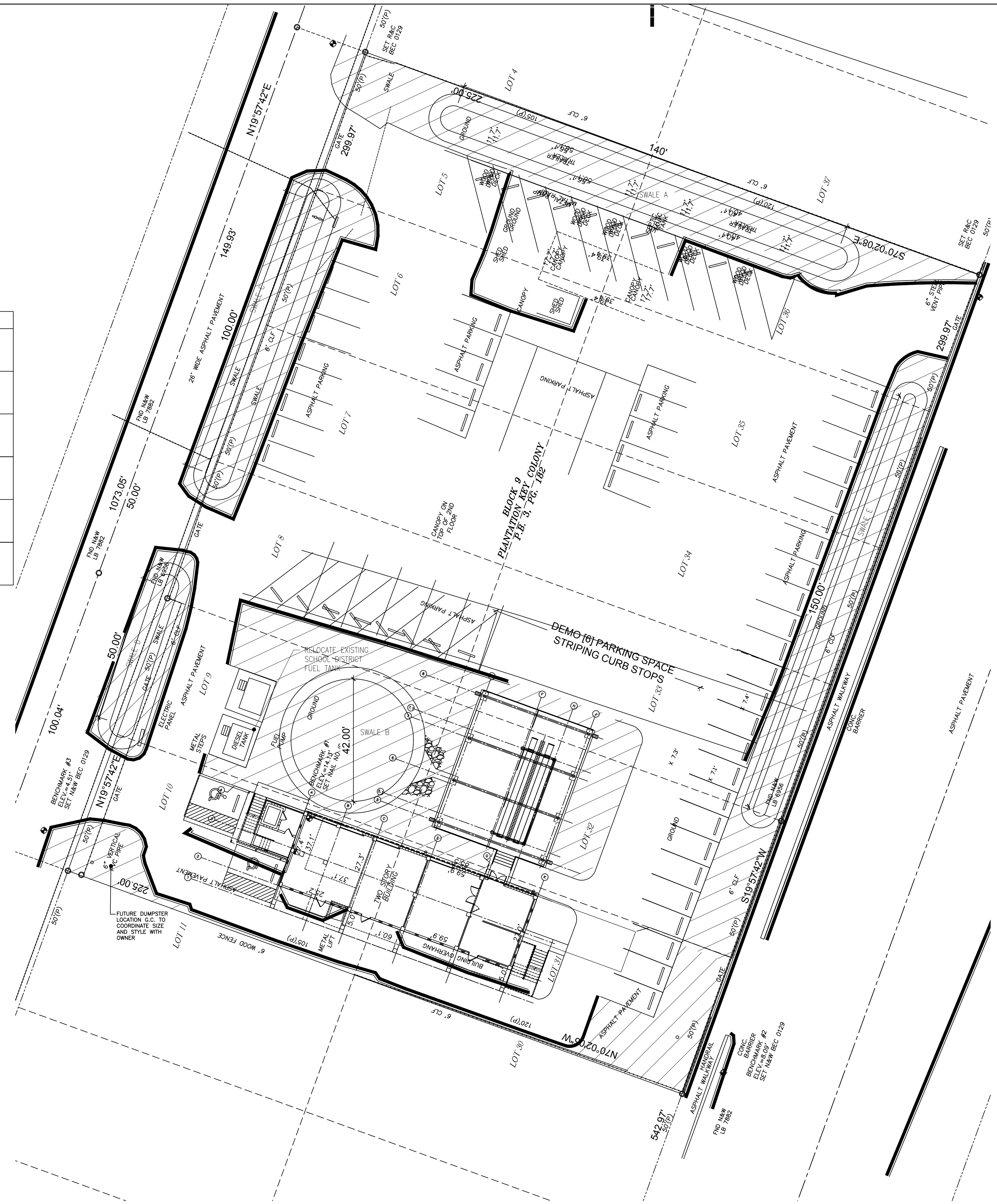
Retention D - Swale Storage Capacity		
Top Area	1015.68	sf
Bottom Area	461.66	sf
Total Volume	969.5	cf

Retention E - Swale Storage Capacity		
Top Area	1949	sf
Bottom Area	647.4	sf
Total Volume	1622	cf

TOTAL SITE STORAGAE		
Swale A	2468.1	cf
Swale B	2367.25	cf
Swale C	1810.5	cf
Swale D	969.5	cf
Swale E	1622	cf
Total	9237.35	cf

LEGEND

-----	STORWATER GUTTER LINE
—————	STORMWATER PVC DRAIN PIPE
-----	STORMWATER ADS PIPE
11.20 373	SURVEY (EXISTING) ELEVATION MARK
8.00	PROPOSED ELEVATION MARK
-----	FENCE LINE



1

STORM WATER DRAINAGE PLAN

SCALE: 1" = 20'-0"

